

STO "STO-THERM CLASSIC" INSULATED RENDER SYSTEM OUTER LEAF BUILD-UP, TO PROVIDE 0.17W/m²K U-VALUE:
MOVEMENT JOINT LOCATION IN ACCORDANCE TO STO REQUIREMENTS

- RENDER BUILD-UP COMPRISING STO BASE COAT, REINFORCING MESH, STO ARMAT CLASSIC & STO FINISH COAT
- 120mm STO INSULATION BOARD
- 6mm STOLEVELL UNIADHESIVE
- 12mm CEMBRIT CEMENT BOARD OR SIMILARLY APPROVED
- 150mm LIGHT STEEL FRAME SYSTEM WITH 150mm MINERAL WOOL INSULATION (0.038 THERMAL CONDUCTIVITY)
- VCL
- 15mm FIRELINE PLASTERBOARD
- 12.5mm PLASTERBOARD - ALL JOINTS TO BE TAPED AND SEALED. SEAL ALL JUNCTIONS WITH INTUMESCENT SEALANT

SKIRTING 25x100mm PENCIL ROUNDED PAINTED MDF
1.2mm X 200mm STEEL PLATE FIXED TO STUDS WITH NOMINAL 45mm PERIMETER INSULATION

FLOOR BUILD-UP (TO PROVIDE 0.11W/m²K U-VALUE):

- 65mm CEMENT SCREED ON SEPARATING LAYER
- 2 LAYERS OF 75mm INSULATION KINGSPAN KOOLTHERM K103
- 1200 GAUGE DPM TO OVERLAP WITH DPC (DPM dependent on soil investigation)
- BEAM AND BLOCK FLOORING TO SE'S DESIGN AND SPECIFICATION

PPC FLASHING
DPC
TELESCOPIC VENT RiW SHEETSEAL 226 (300mm) MIN. 100mm OVERLAP TO DPC AT BOTTOM & AT TOP WITH BREATHER MEMBRANE. MECHANICAL FIXINGS PER RiW REQUIREMENTS
INSULATION TO OVERLAP A MINIMUM OF 75mm WITH THE 30mm PERIMETER INSULATION

DPC TO WRAP AROUND END OF BLOCK AND TO BE WELL LAPPED WITH RiW SHEETSEAL 226 (300mm)
LEAN CONCRETE SAND MIX
FOUNDATION TO SE'S DESIGN AND SPECIFICATIONS
100mm CONCRETE OVERSITE

Rev.	Date	Description	Init.
B	26/01/2017	General Build up Amendments	CM
A	14/12/2016	General Build up Amendments	EHG/DW

Client

HADFRAME

Project Title

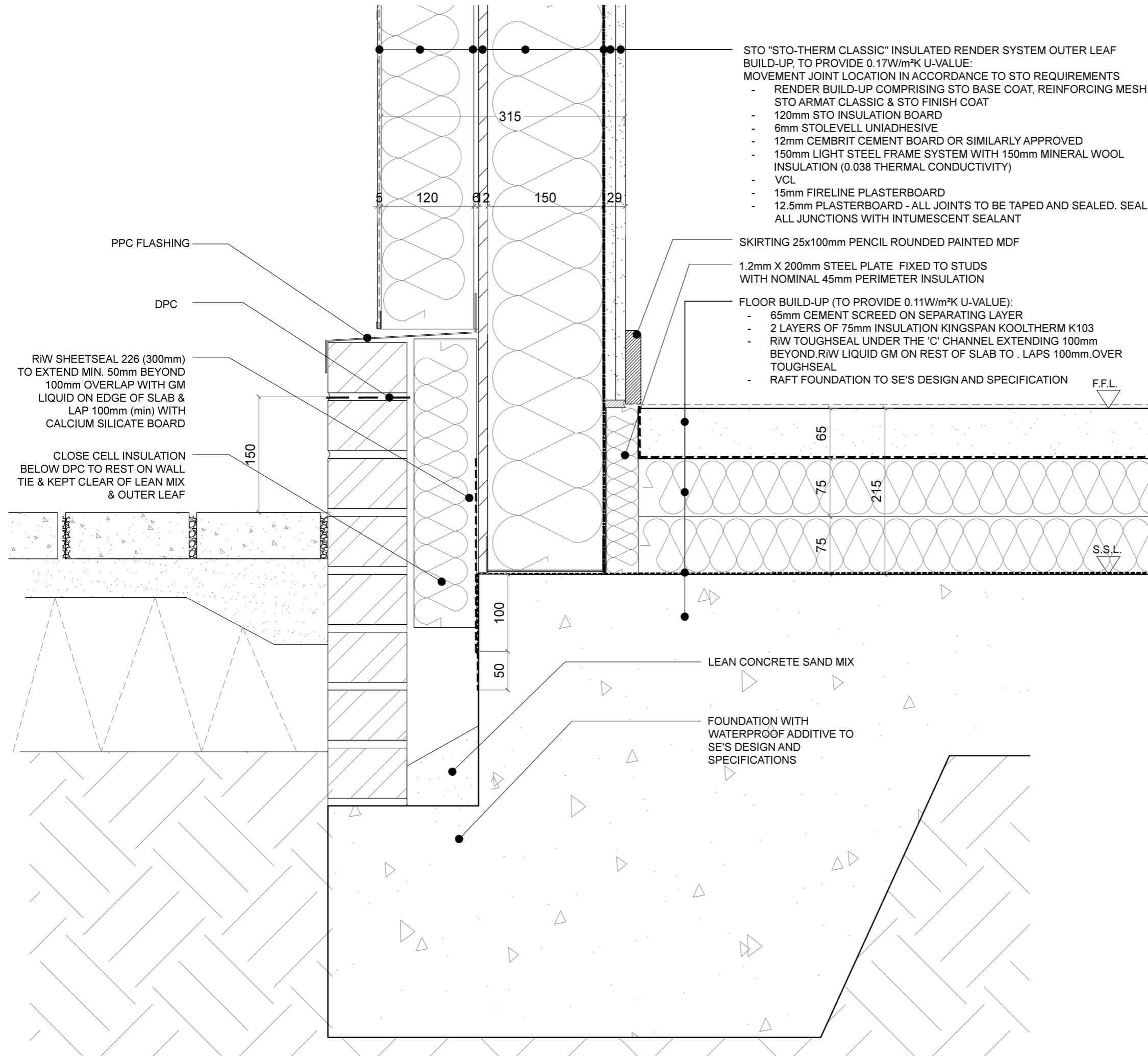
HADFRAME SYSTEM

Drawing Title
3B5P
EXTERNAL WALL AND GROUND FLOOR JUNCTION
INSULATED RENDER (NO CAVITY)

Cad File	Sheet Size	Scale
1485_DETAILS SET B	A3	1:5
Drawn by	Drawing Date	Approved by
EHG	AUG 2016	DW
Project No.	Drawing No.	Revision
1485	D01B-2	B

This drawing is property of Daria Wong Architects © and must not be copied or otherwise reproduced. All dimensions must be checked on site before commencing work. No dimensions to be scaled from this drawing. This drawing was produced using AutoCad LT.

PRELIMINARY



Rev.	Date	Description	Init.
B	26/01/2017	General Build up Amendments	CM
A	19/09/16	Blk/wk upstand omitted	DW

Client

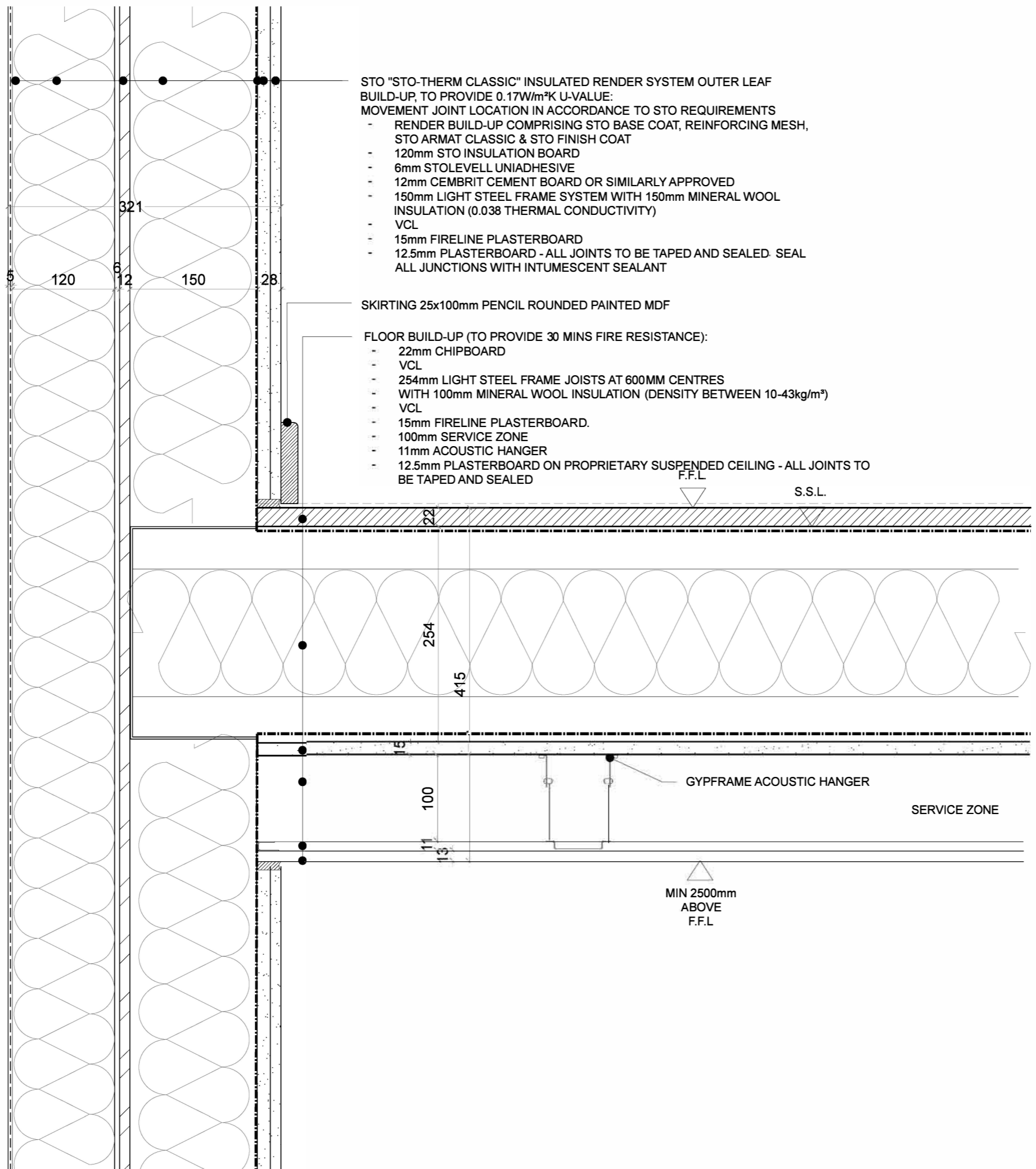
HADFRAME

Project Title

HADFRAME SYSTEM

Drawing Title
3B5P
EXTERNAL WALL AND RAFT JUNCTION
INSULATED RENDER (NO CAVITY)

Cad File	Sheet Size	Scale
1485_DETAILS SET B	A3	1:5
Drawn by	Drawing Date	Approved by
EHG	AUG 2016	DW
Project No.	Drawing No.	Revision
1485	D01B-7	B



- STO "STO-THERM CLASSIC" INSULATED RENDER SYSTEM OUTER LEAF BUILD-UP, TO PROVIDE 0.17W/m²K U-VALUE:
 MOVEMENT JOINT LOCATION IN ACCORDANCE TO STO REQUIREMENTS
- RENDER BUILD-UP COMPRISING STO BASE COAT, REINFORCING MESH, STO ARMAT CLASSIC & STO FINISH COAT
 - 120mm STO INSULATION BOARD
 - 6mm STOLEVELL UNIADHESIVE
 - 12mm CEMBRIT CEMENT BOARD OR SIMILARLY APPROVED
 - 150mm LIGHT STEEL FRAME SYSTEM WITH 150mm MINERAL WOOL INSULATION (0.038 THERMAL CONDUCTIVITY)
 - VCL
 - 15mm FIRELINE PLASTERBOARD
 - 12.5mm PLASTERBOARD - ALL JOINTS TO BE TAPED AND SEALED. SEAL ALL JUNCTIONS WITH INTUMESCENT SEALANT

- SKIRTING 25x100mm PENCIL ROUNDED PAINTED MDF
- FLOOR BUILD-UP (TO PROVIDE 30 MINS FIRE RESISTANCE):
- 22mm CHIPBOARD
 - VCL
 - 254mm LIGHT STEEL FRAME JOISTS AT 600MM CENTRES WITH 100mm MINERAL WOOL INSULATION (DENSITY BETWEEN 10-43kg/m³)
 - VCL
 - 15mm FIRELINE PLASTERBOARD.
 - 100mm SERVICE ZONE
 - 11mm ACOUSTIC HANGER
 - 12.5mm PLASTERBOARD ON PROPRIETARY SUSPENDED CEILING - ALL JOINTS TO BE TAPED AND SEALED

Rev.	Date	Description	Init.
B	26/01/2017	General Build up Amendments	CM
A	14/12/2016	General Build up Amendments	EHG/DW

Client

HADFRAME

Project Title

HADFRAME SYSTEM

Drawing Title

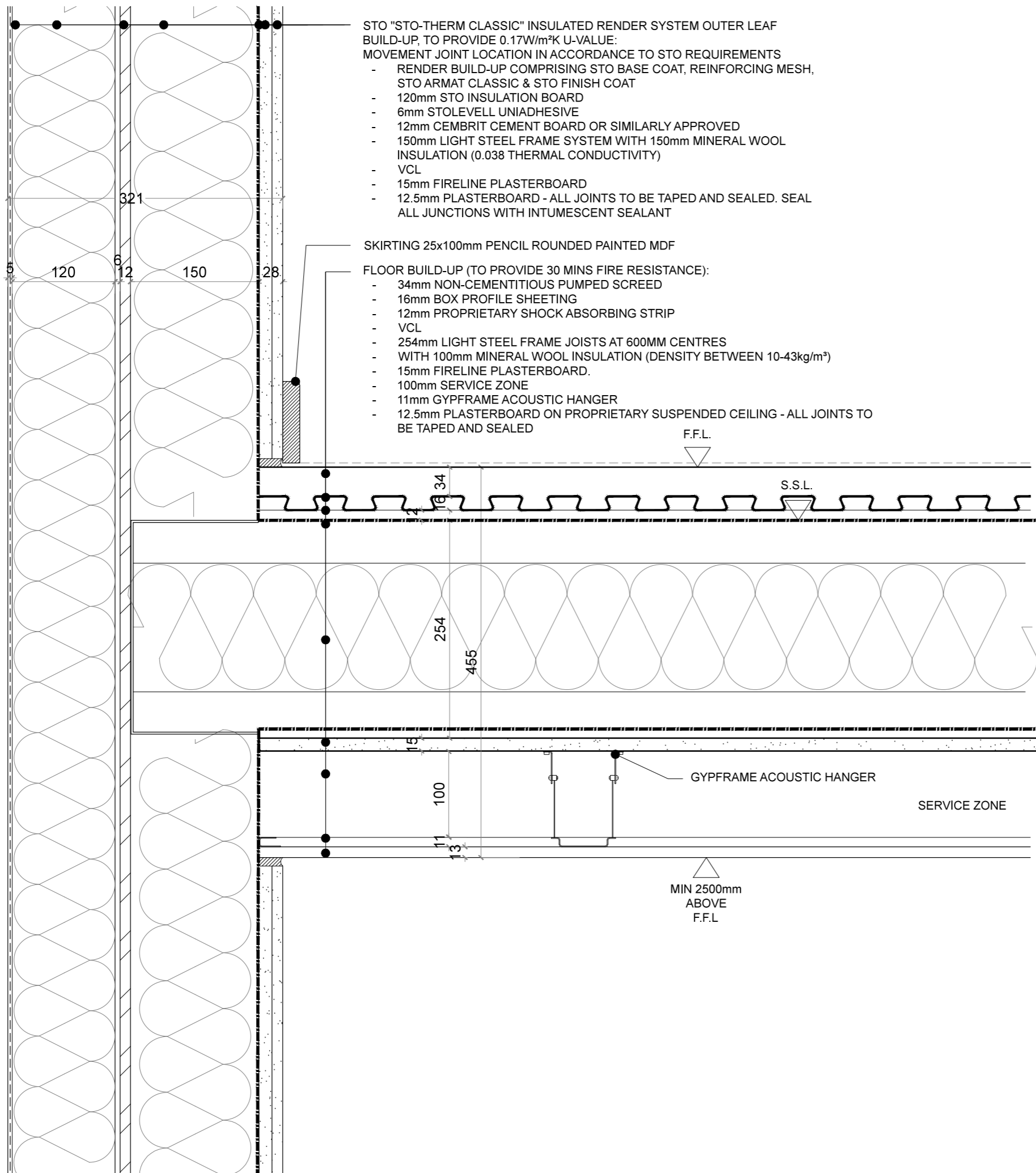
3B5P
 EXTERNAL WALL AND FIRST FLOOR JUNCTION
 INSULATED RENDER (NO CAVITY)

Cad File	Sheet Size	Scale
1485_DETAILS SET 03	B3	1:5
Drawn by	Drawing Date	Approved by
EHG	AUG 2016	DW
Project No.	Drawing No.	Revision
1485	D02B-2	B

HADFRAME.co.uk
 PERFECT COMMERCIAL AND RESIDENTIAL STEEL SECTIONS

This drawing is property of Daria Wong Architects © and must not be copied or otherwise reproduced. All dimensions must be checked on site before commencing work. No dimensions to be scaled from this drawing. This drawing was produced using AutoCad LT.

PRELIMINARY



Rev.	Date	Description	Init.
-	-	-	-

Client

HADFRAME

Project Title

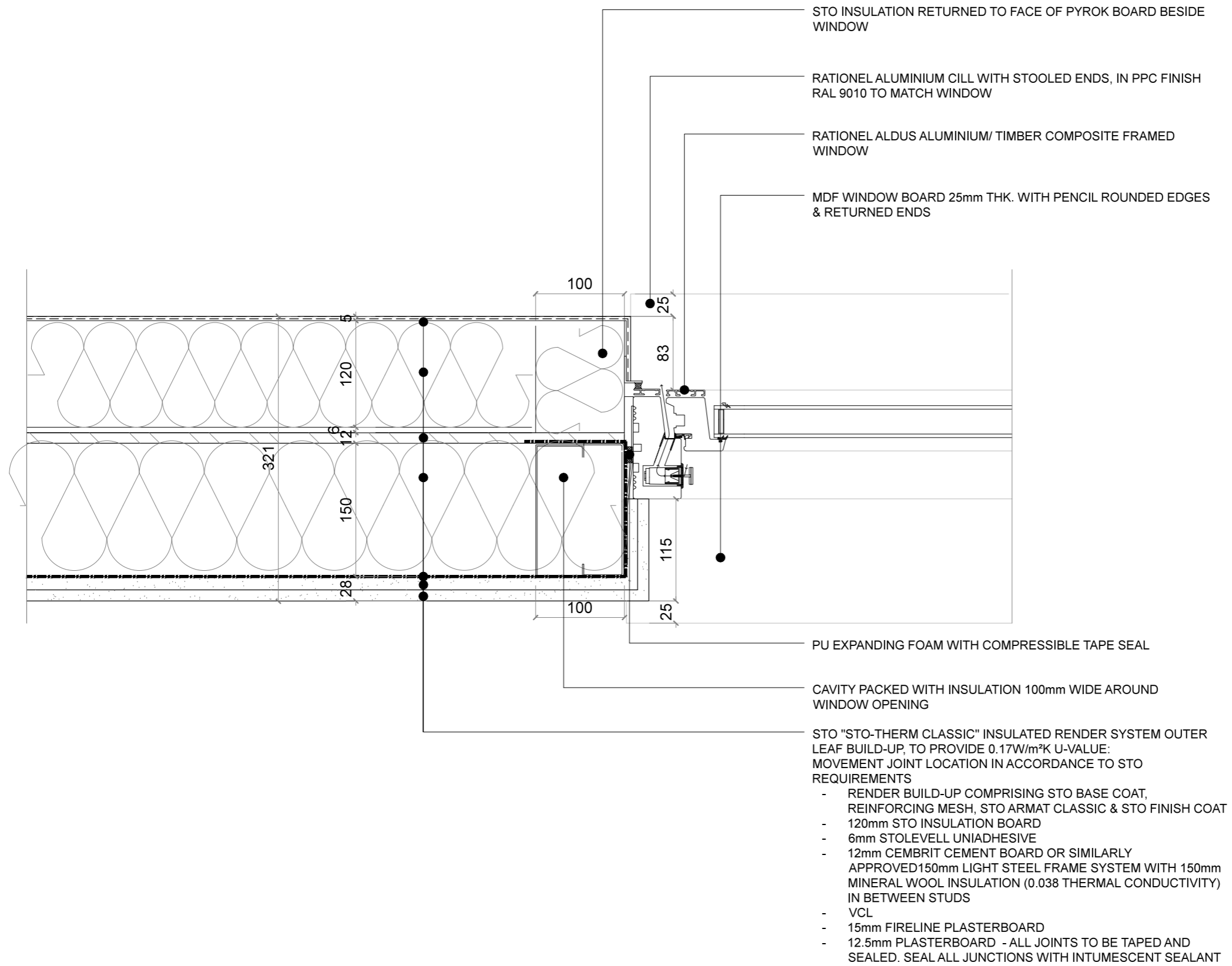
HADFRAME SYSTEM

Drawing Title
3B5P
EXTERNAL WALL AND FIRST FLOOR JUNCTION
INSULATED RENDER (NO CAVITY)

Cad File	Sheet Size	Scale
1485_DETAILS SET B	A3	1:5
Drawn by	Drawing Date	Approved by
AM	AUG 2016	DW
Project No.	Drawing No.	Revision
1485	D02B-7	-

This drawing is property of Daria Wong Architects © and must not be copied or otherwise reproduced. All dimensions must be checked on site before commencing work. No dimensions to be scaled from this drawing. This drawing was produced using AutoCad LT.

PRELIMINARY



Rev.	Date	Description	Init.
B	26/01/2017	General Build up Amendments	CM
A	14/12/2016	General Build up Amendments	EHG/DW

Client

HADFRAME

Project Title

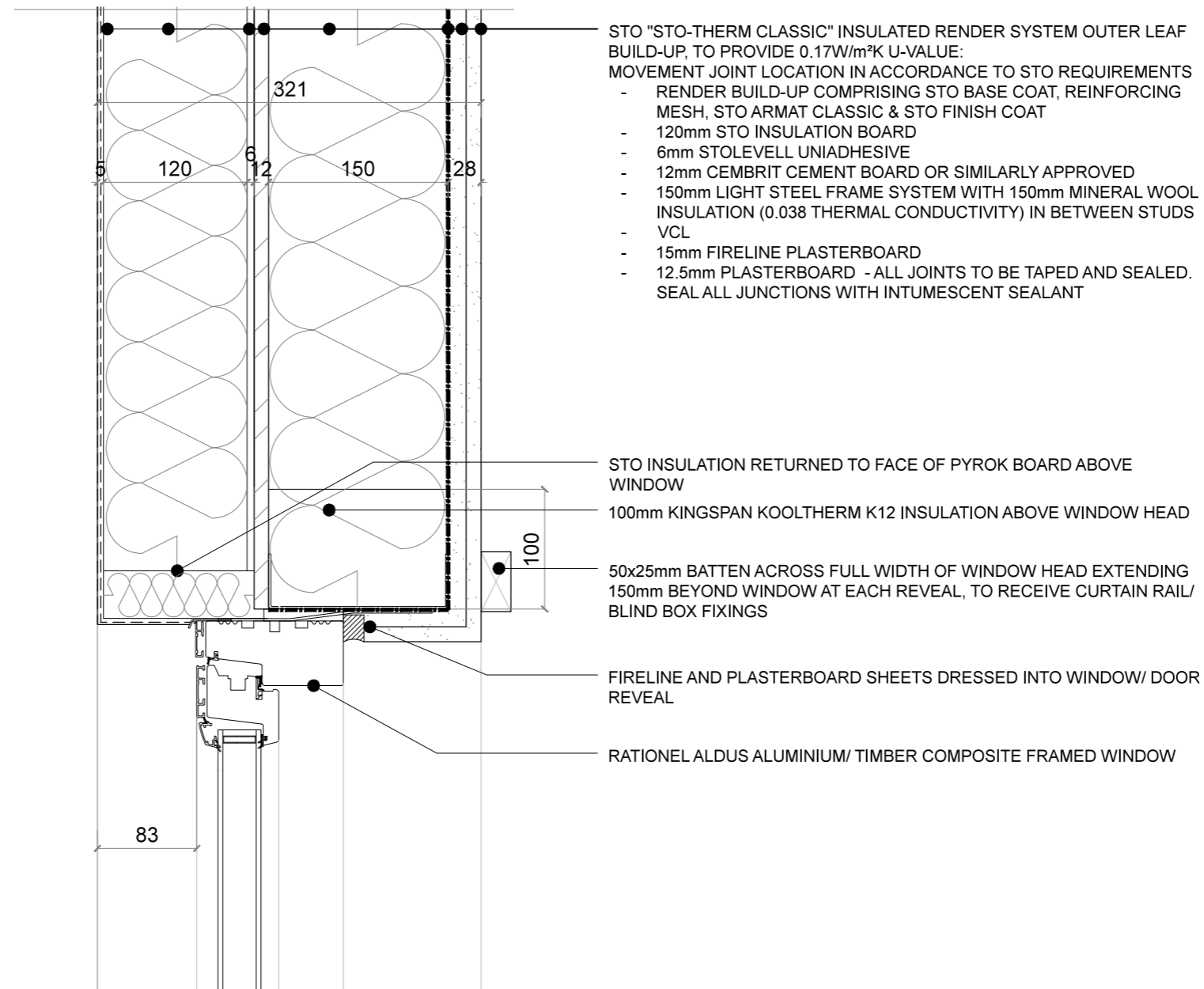
HADFRAME SYSTEM

Drawing Title
3B5P
WINDOW JAMB DETAIL
RENDER (NO CAVITY)

Cad File	Sheet Size	Scale
1485_DETAILS SET 03	A3	1:5
Drawn by	Drawing Date	Approved by
EHG	AUG 2016	DW
Project No.	Drawing No.	Revision
1485	D04B-6	B

This drawing is property of Daria Wong Architects © and must not be copied or otherwise reproduced. All dimensions must be checked on site before commencing work. No dimensions to be scaled from this drawing. This drawing was produced using AutoCad LT.

PRELIMINARY



Rev.	Date	Description	Init.
B	26/01/2017	General Build up Amendments	CM
A	14/12/2016	General Build up Amendments	EHG/DW

Client

HADFRAME

Project Title

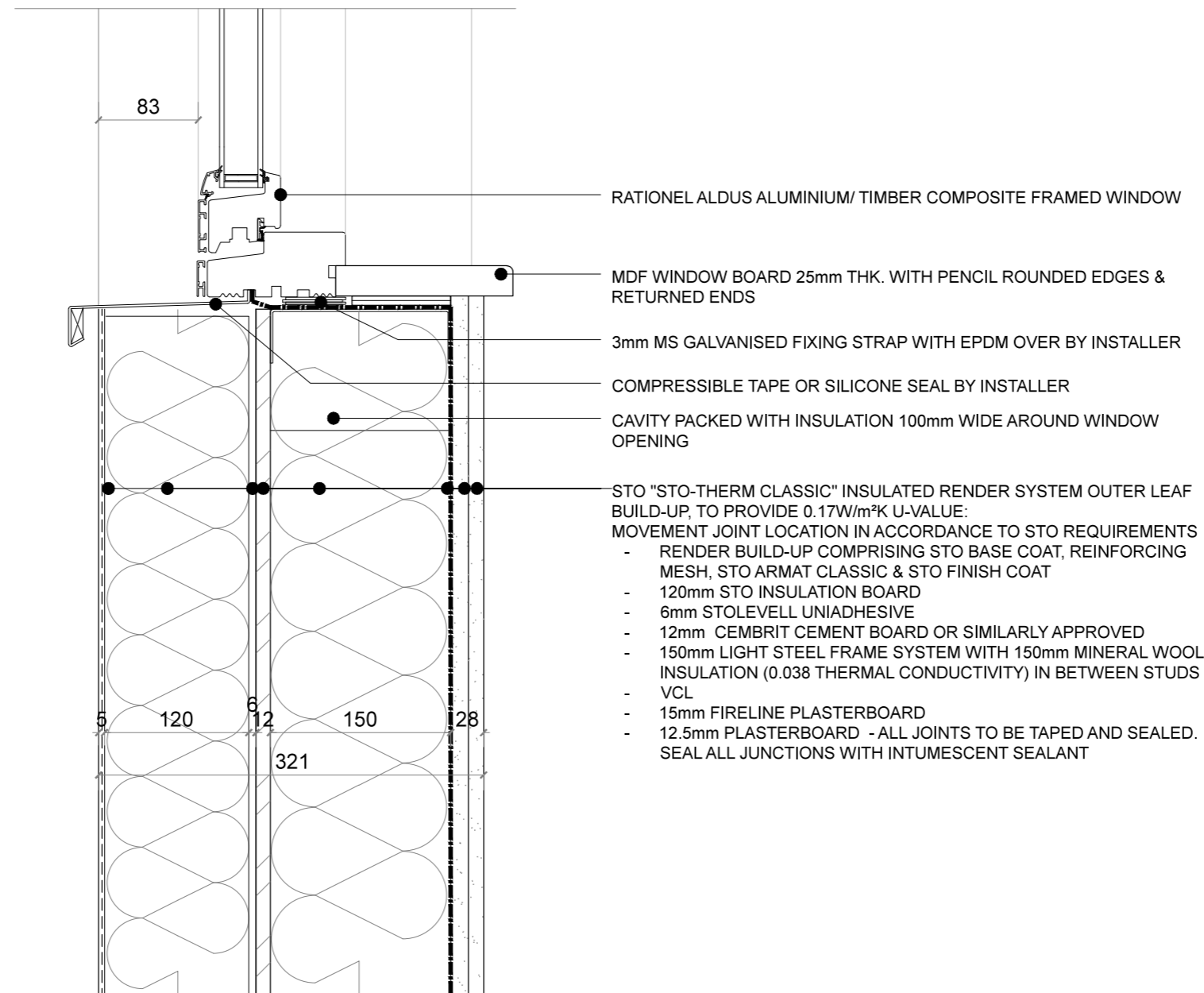
HADFRAME SYSTEM

Drawing Title
3B5P
WINDOW HEAD DETAIL
INSULATED RENDER (NO CAVITY)

Cad File	Sheet Size	Scale
1485_DETAILS SET 03	A3	1:5
Drawn by	Drawing Date	Approved by
EHG	AUG 2016	DW
Project No.	Drawing No.	Revision
1485	D04B-7	B

This drawing is property of Daria Wong Architects © and must not be copied or otherwise reproduced. All dimensions must be checked on site before commencing work. No dimensions to be scaled from this drawing. This drawing was produced using AutoCad LT.

PRELIMINARY



B	26/01/2017	General Build up Amendments	CM
A	14/12/2016	General Build up Amendments	EHG/DW
Rev.	Date	Description	Init.

Client

HADFRAME

Project Title

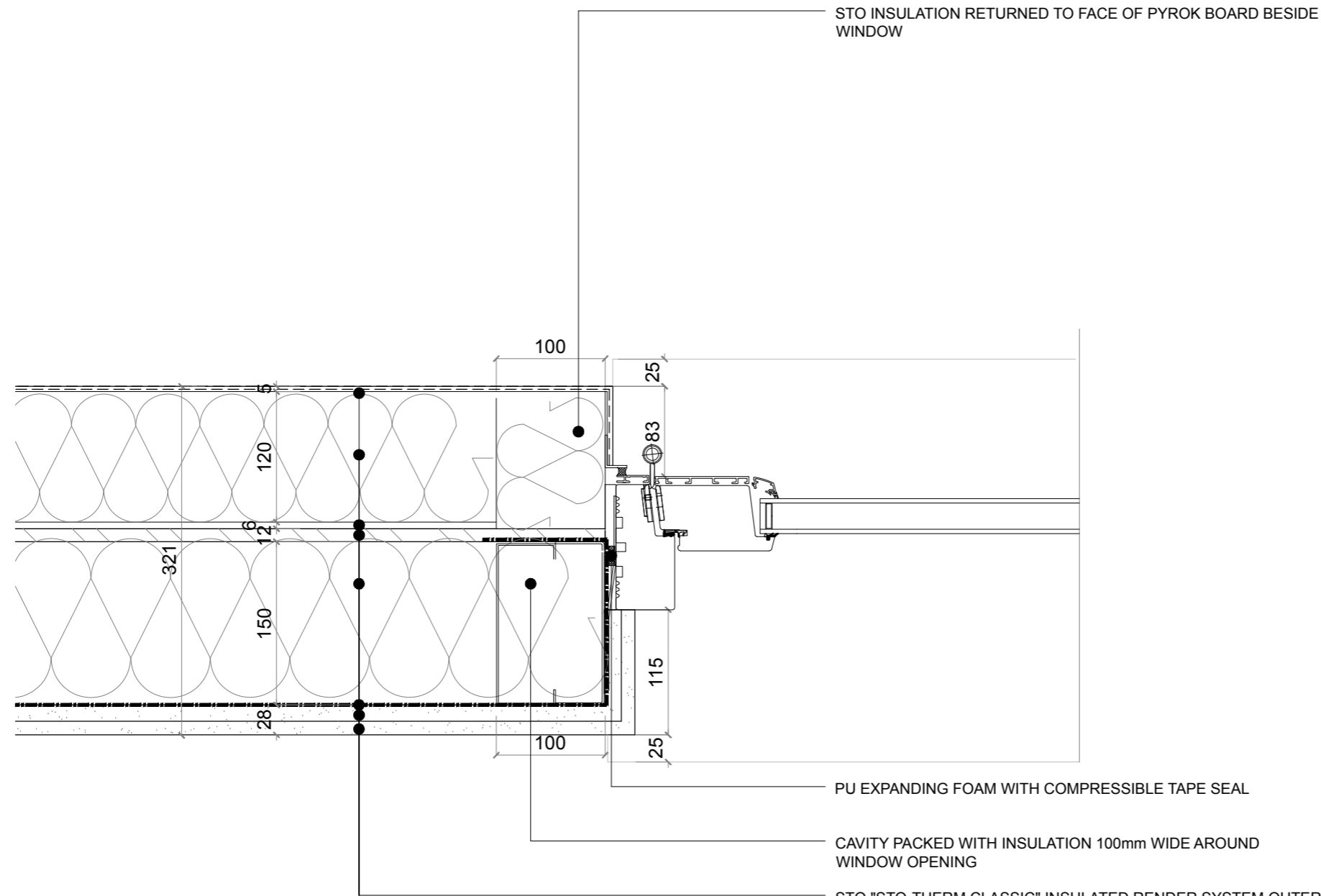
HADFRAME SYSTEM

Drawing Title
3B5P
WINDOW CILL DETAIL
INSULATED RENDER (NO CAVITY)

Cad File	Sheet Size	Scale
1485_DETAILS SET 03	A3	1:5
Drawn by	Drawing Date	Approved by
EHG	AUG 2016	DW
Project No.	Drawing No.	Revision
1485	D04B-8	B

This drawing is property of Daria Wong Architects © and must not be copied or otherwise reproduced. All dimensions must be checked on site before commencing work. No dimensions to be scaled from this drawing. This drawing was produced using AutoCad LT.

PRELIMINARY



STO INSULATION RETURNED TO FACE OF PYROK BOARD BESIDE WINDOW

PU EXPANDING FOAM WITH COMPRESSIBLE TAPE SEAL

CAVITY PACKED WITH INSULATION 100mm WIDE AROUND WINDOW OPENING

STO "STO-THERM CLASSIC" INSULATED RENDER SYSTEM OUTER LEAF BUILD-UP, TO PROVIDE 0.17W/m²K U-VALUE:
MOVEMENT JOINT LOCATION IN ACCORDANCE TO STO REQUIREMENTS

- RENDER BUILD-UP COMPRISING STO BASE COAT, REINFORCING MESH, STO ARMAT CLASSIC & STO FINISH COAT
- 120mm STO INSULATION BOARD
- 6mm STOLEVELL UNIADHESIVE
- 12mm CEMBRIT CEMENT BOARD OR SIMILARLY APPROVED
- 150mm LIGHT STEEL FRAME SYSTEM WITH 150mm MINERAL WOOL INSULATION (0.038 THERMAL CONDUCTIVITY) IN BETWEEN STUDS
- VCL
- 15mm FIRELINE PLASTERBOARD
- 12.5mm PLASTERBOARD - ALL JOINTS TO BE TAPED AND SEALED. SEAL ALL JUNCTIONS WITH INTUMESCENT SEALANT

B	26/01/2017	General Build up Amendments	CM
A	14/12/2016	General Build up Amendments	EHG/DW
Rev.	Date	Description	Init.

Client

HADFRAME

Project Title

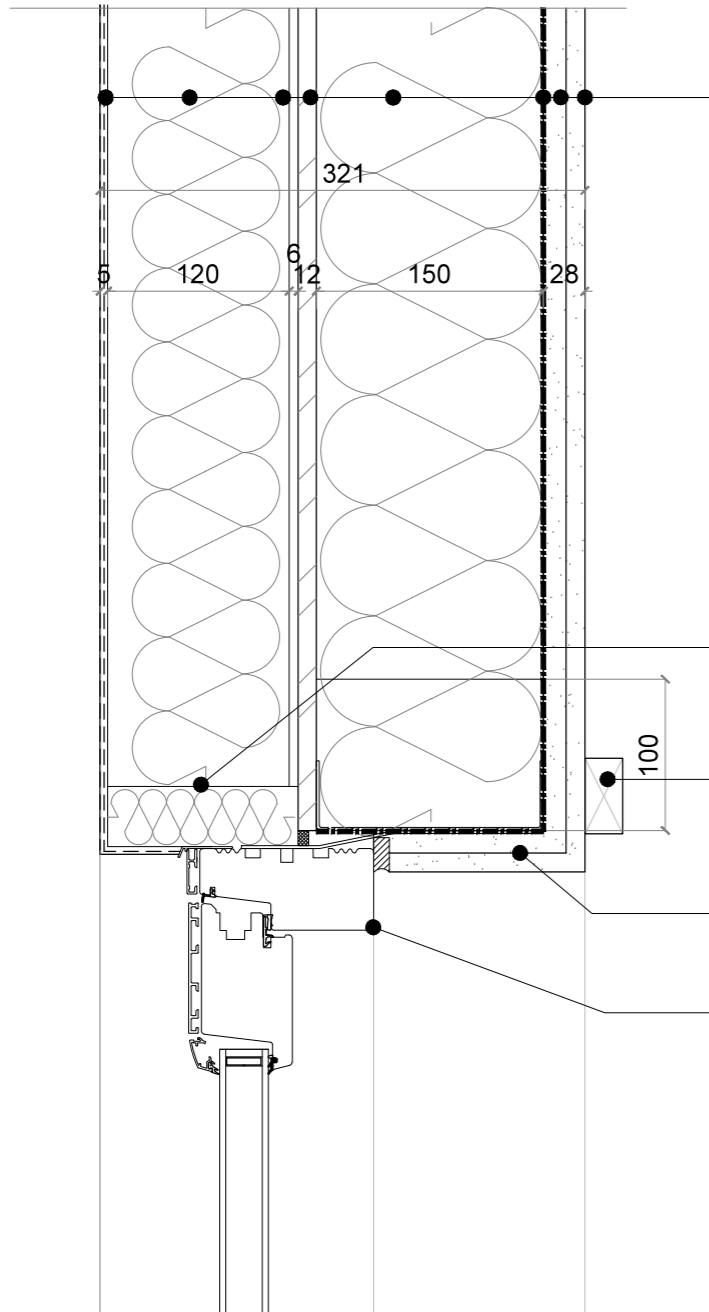
HADFRAME SYSTEM

Drawing Title
3B5P
DOOR JAMB DETAIL
INSULATED RENDER (NO CAVITY)

Cad File	Sheet Size	Scale
1485_DETAILS SET 03	A3	1:5
Drawn by	Drawing Date	Approved by
EHG	AUG 2016	DW
Project No.	Drawing No.	Revision
1485	D04B-16	B

This drawing is property of Daria Wong Architects © and must not be copied or otherwise reproduced. All dimensions must be checked on site before commencing work. No dimensions to be scaled from this drawing. This drawing was produced using AutoCad LT.

PRELIMINARY



STO "STO-THERM CLASSIC" INSULATED RENDER SYSTEM OUTER LEAF BUILD-UP, TO PROVIDE 0.17W/m²K U-VALUE:
MOVEMENT JOINT LOCATION IN ACCORDANCE TO STO REQUIREMENTS

- RENDER BUILD-UP COMPRISING STO BASE COAT, REINFORCING MESH, STO ARMAT CLASSIC & STO FINISH COAT
- 120mm STO INSULATION BOARD
- 6mm STOLEVELL UNIADHESIVE
- 12mm CEMBRIT CEMENT BOARD OR SIMILARLY APPROVED
- 150mm LIGHT STEEL FRAME SYSTEM WITH 150mm MINERAL WOOL INSULATION (0.038 THERMAL CONDUCTIVITY) IN BETWEEN STUDS
- VCL
- 15mm FIRELINE PLASTERBOARD
- 12.5mm PLASTERBOARD - ALL JOINTS TO BE TAPED AND SEALED. SEAL ALL JUNCTIONS WITH INTUMESCENT SEALANT

STO INSULATION RETURNED TO FACE OF PYROK BOARD ABOVE WINDOW

50x25mm BATTEN ACROSS FULL WIDTH OF WINDOW HEAD EXTENDING 150mm BEYOND WINDOW AT EACH REVEAL, TO RECEIVE CURTAIN RAIL/BLIND BOX FIXINGS

FIRELINE AND PLASTERBOARD SHEETS DRESSED INTO WINDOW/ DOOR REVEAL

RATIONEL ALDUS ALUMINIUM/ TIMBER COMPOSITE FRAMED PATIO DOOR

Rev.	Date	Description	Init.
B	26/01/2017	General Build up Amendments	CM
A	14/12/2016	General Build up Amendments	EHG/DW

Client

HADFRAME

Project Title

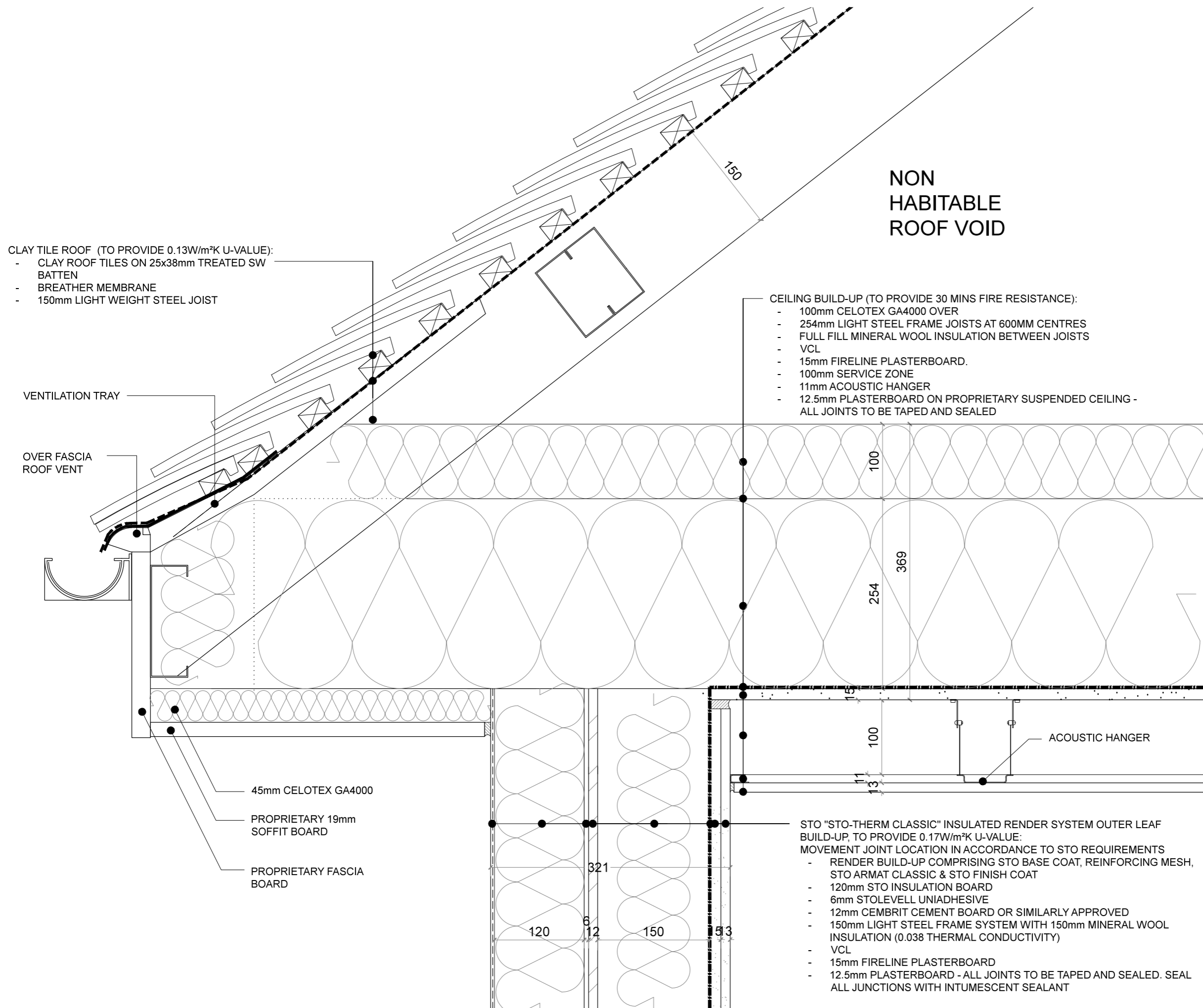
HADFRAME SYSTEM

Drawing Title
3B5P
DOOR HEAD DETAIL
INSULATED RENDER (NO CAVITY)

Cad File	Sheet Size	Scale
1485_DETAILS SET 03	A3	1:5
Drawn by	Drawing Date	Approved by
EHG	AUG 2016	DW
Project No.	Drawing No.	Revision
1485	D04B-17	B

This drawing is property of Daria Wong Architects © and must not be copied or otherwise reproduced. All dimensions must be checked on site before commencing work. No dimensions to be scaled from this drawing. This drawing was produced using AutoCad LT.

PRELIMINARY



CLAY TILE ROOF (TO PROVIDE 0.13W/m²K U-VALUE):

- CLAY ROOF TILES ON 25x38mm TREATED SW BATTEN
- BREATHER MEMBRANE
- 150mm LIGHT WEIGHT STEEL JOIST

CEILING BUILD-UP (TO PROVIDE 30 MINS FIRE RESISTANCE):

- 100mm CELOTEX GA4000 OVER
- 254mm LIGHT STEEL FRAME JOISTS AT 600MM CENTRES
- FULL FILL MINERAL WOOL INSULATION BETWEEN JOISTS
- VCL
- 15mm FIRELINE PLASTERBOARD.
- 100mm SERVICE ZONE
- 11mm ACOUSTIC HANGER
- 12.5mm PLASTERBOARD ON PROPRIETARY SUSPENDED CEILING - ALL JOINTS TO BE TAPED AND SEALED

STO "STO-THERM CLASSIC" INSULATED RENDER SYSTEM OUTER LEAF BUILD-UP, TO PROVIDE 0.17W/m²K U-VALUE:

MOVEMENT JOINT LOCATION IN ACCORDANCE TO STO REQUIREMENTS

- RENDER BUILD-UP COMPRISING STO BASE COAT, REINFORCING MESH, STO ARMAT CLASSIC & STO FINISH COAT
- 120mm STO INSULATION BOARD
- 6mm STOLEVELL UNIADHESIVE
- 12mm CEMBRIT CEMENT BOARD OR SIMILARLY APPROVED
- 150mm LIGHT STEEL FRAME SYSTEM WITH 150mm MINERAL WOOL INSULATION (0.038 THERMAL CONDUCTIVITY)
- VCL
- 15mm FIRELINE PLASTERBOARD
- 12.5mm PLASTERBOARD - ALL JOINTS TO BE TAPED AND SEALED. SEAL ALL JUNCTIONS WITH INTUMESCENT SEALANT

NON HABITABLE ROOF VOID

Rev.	Date	Description	Init.
B	26/01/2017	General Build up Amendments	CM
A	14/12/2016	General Build up Amendments	EHG/DW

Client
HADFRAME

Project Title
HADFRAME SYSTEM

Drawing Title		
3B5P TRUSS ROOF EAVES DETAIL INSULATED RENDER (NO CAVITY)		
Cad File	Sheet Size	Scale
1485_DETAILS SET 03	A3	1:5
Drawn by	Drawing Date	Approved by
EHG	AUG 2016	DW
Project No.	Drawing No.	Revision
1485	D06B-2	B

This drawing is property of Daria Wong Architects © and must not be copied or otherwise reproduced. All dimensions must be checked on site before commencing work. No dimensions to be scaled from this drawing. This drawing was produced using AutoCad LT.

PRELIMINARY

**HABITABLE
ROOF VOID**

- CLAY TILE ROOF (TO PROVIDE 0.13W/m²K U-VALUE):**
- CLAY ROOF TILES ON 25x38mm TREATED SW BATTEN
 - BREATHER MEMBRANE
 - 50mm COUNTER BATTEN
 - 100mm THICK ECOTHERM ECO-VERSAL INSULATION
 - 18mm WBP
 - 150mm LIGHT STEEL FRAME SYSTEM WITH 120mm ECOTHERM ECO-VERSAL INSULATION IN BETWEEN

- FLOOR BUILD-UP (TO PROVIDE 30 MINS FIRE RESISTANCE):**
- 22mm CHIPBOARD ON VCL
 - 250mm LIGHT STEEL FRAME JOISTS AT 600MM CENTRES WITH 100mm MINERAL WOOL INSULATION (DENSITY BETWEEN 10-43kg/m³)
 - VCL
 - 15mm FIRELINE PLASTERBOARD.
 - 100mm SERVICE ZONE
 - 11mm ACOUSTIC HANGER
 - 12.5mm PLASTERBOARD ON PROPRIETARY SUSPENDED CEILING - ALL JOINTS TO BE TAPED AND SEALED

- STO "STO-THERM CLASSIC" INSULATED RENDER SYSTEM OUTER LEAF BUILD-UP, TO PROVIDE 0.17W/m²K U-VALUE:**
MOVEMENT JOINT LOCATION IN ACCORDANCE TO STO REQUIREMENTS
- RENDER BUILD-UP COMPRISING STO BASE COAT, REINFORCING MESH, STO ARMAT CLASSIC & STO FINISH COAT
 - 120mm STO INSULATION BOARD
 - 6mm STOLEVELL UNIADHESIVE
 - 12mm CEMBRIT CEMENT BOARD OR SIMILARLY APPROVED
 - 150mm LIGHT STEEL FRAME SYSTEM WITH 150mm MINERAL WOOL INSULATION (0.038 THERMAL CONDUCTIVITY)
 - VCL
 - 15mm FIRELINE PLASTERBOARD
 - 12.5mm PLASTERBOARD - ALL JOINTS TO BE TAPED AND SEALED. SEAL ALL JUNCTIONS WITH INTUMESCENT SEALANT

Rev.	Date	Description	Init.
B	26/01/2017	General Build up Amendments	CM
A	14/12/2016	General Build Up Amendments	EHG/DW

Client

HADFRAME

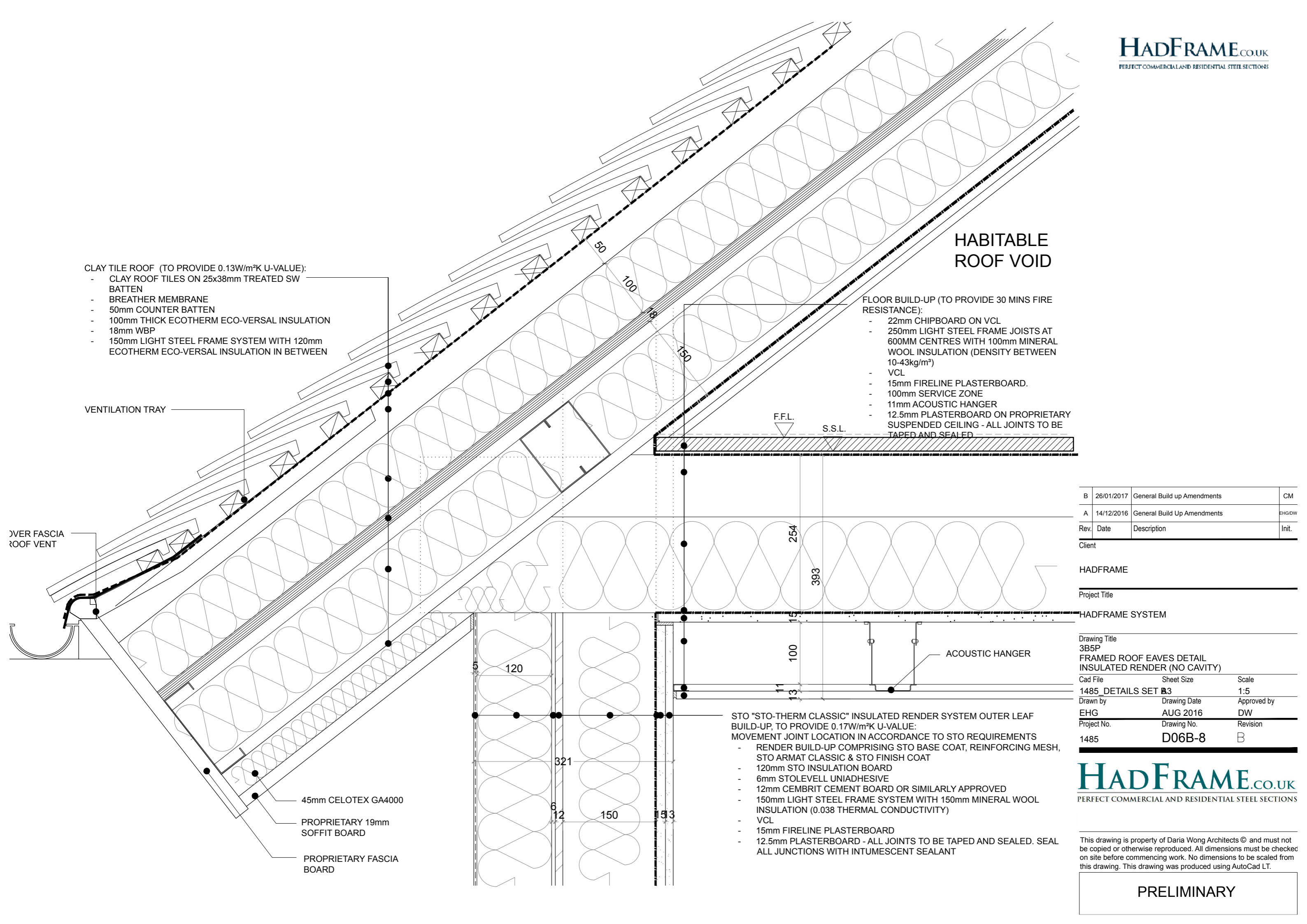
Project Title

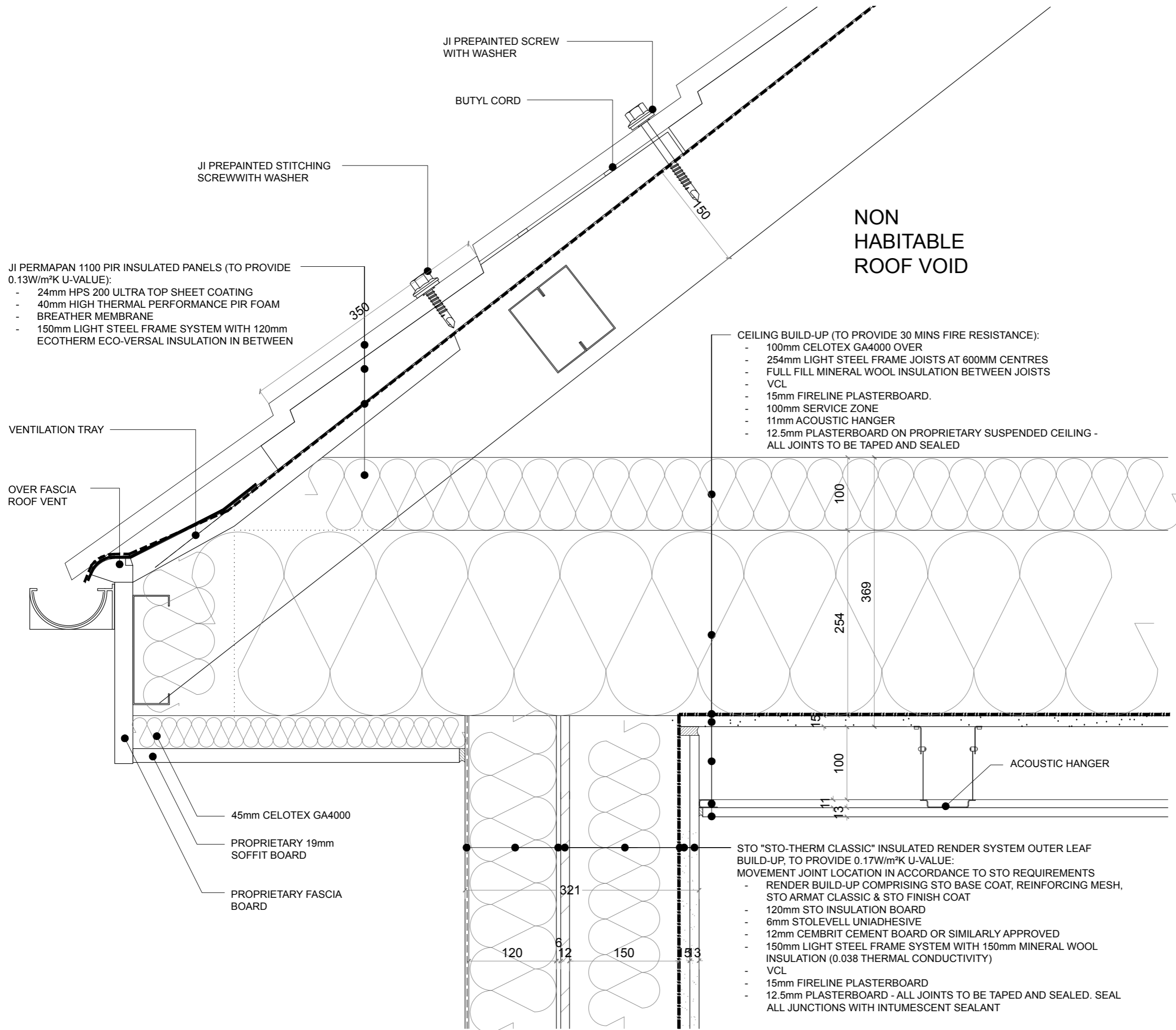
HADFRAME SYSTEM

Drawing Title		
3B5P FRAMED ROOF EAVES DETAIL INSULATED RENDER (NO CAVITY)		
Cad File	Sheet Size	Scale
1485_DETAILS SET 03	A3	1:5
Drawn by	Drawing Date	Approved by
EHG	AUG 2016	DW
Project No.	Drawing No.	Revision
1485	D06B-8	B

This drawing is property of Daria Wong Architects © and must not be copied or otherwise reproduced. All dimensions must be checked on site before commencing work. No dimensions to be scaled from this drawing. This drawing was produced using AutoCad LT.

PRELIMINARY





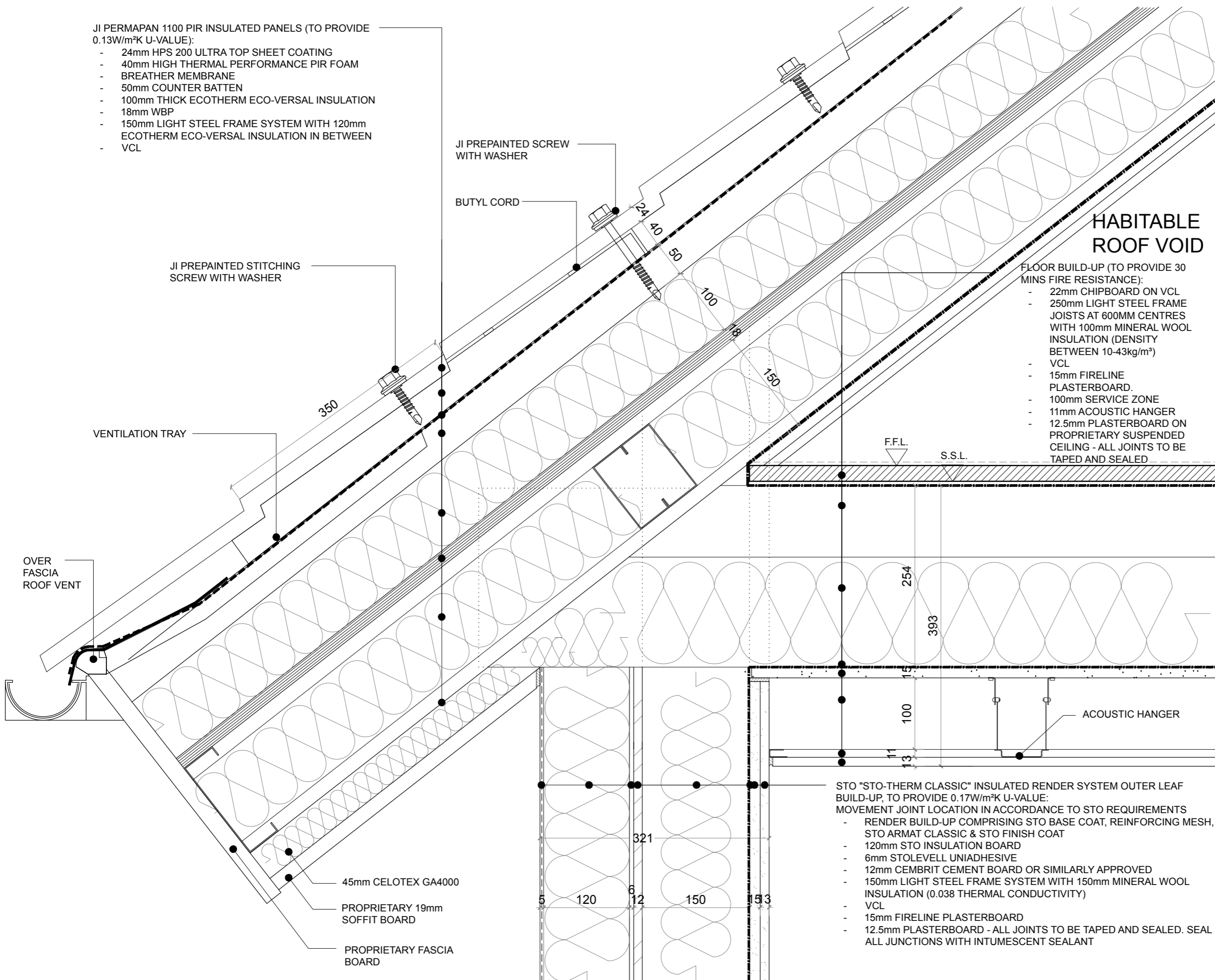
Rev.	Date	Description	Init.
Client			
HADFRAME			
Project Title			
HADFRAME SYSTEM			
Drawing Title			
3B5P			
TRUSS ROOF EAVES DETAIL			
INSULATED RENDER & COMPOSITE PANEL TILE (NO CAVITY)			
Cad File	Sheet Size	Scale	
1485_DETAILS SET 03	A3	1:5	
Drawn by	Drawing Date	Approved by	
AM	NOV 2016	DW	
Project No.	Drawing No.	Revision	
1485	D06B-13	-	

This drawing is property of Daria Wong Architects © and must not be copied or otherwise reproduced. All dimensions must be checked on site before commencing work. No dimensions to be scaled from this drawing. This drawing was produced using AutoCad LT.

PRELIMINARY

JI PERMAPAN 1100 PIR INSULATED PANELS (TO PROVIDE 0.13W/m²K U-VALUE):

- 24mm HPS 200 ULTRA TOP SHEET COATING
- 40mm HIGH THERMAL PERFORMANCE PIR FOAM
- BREATHER MEMBRANE
- 50mm COUNTER BATTEN
- 100mm THICK ECOTHERM ECO-VERSAL INSULATION
- 18mm WBP
- 150mm LIGHT STEEL FRAME SYSTEM WITH 120mm ECOTHERM ECO-VERSAL INSULATION IN BETWEEN VCL



HABITABLE ROOF VOID

FLOOR BUILD-UP (TO PROVIDE 30 MINS FIRE RESISTANCE):

- 22mm CHIPBOARD ON VCL
- 250mm LIGHT STEEL FRAME JOISTS AT 600MM CENTRES WITH 100mm MINERAL WOOL INSULATION (DENSITY BETWEEN 10-43kg/m³)
- VCL
- 15mm FIRELINE PLASTERBOARD.
- 100mm SERVICE ZONE
- 11mm ACOUSTIC HANGER
- 12.5mm PLASTERBOARD ON PROPRIETARY SUSPENDED CEILING - ALL JOINTS TO BE TAPED AND SEALED

STO "STO-THERM CLASSIC" INSULATED RENDER SYSTEM OUTER LEAF BUILD-UP, TO PROVIDE 0.17W/m²K U-VALUE:

- MOVEMENT JOINT LOCATION IN ACCORDANCE TO STO REQUIREMENTS
- RENDER BUILD-UP COMPRISING STO BASE COAT, REINFORCING MESH, STO ARMAT CLASSIC & STO FINISH COAT
- 120mm STO INSULATION BOARD
- 6mm STOLEVELL UNIADHESIVE
- 12mm CEMBRIT CEMENT BOARD OR SIMILARLY APPROVED
- 150mm LIGHT STEEL FRAME SYSTEM WITH 150mm MINERAL WOOL INSULATION (0.038 THERMAL CONDUCTIVITY)
- VCL
- 15mm FIRELINE PLASTERBOARD
- 12.5mm PLASTERBOARD - ALL JOINTS TO BE TAPED AND SEALED. SEAL ALL JUNCTIONS WITH INTUMESCENT SEALANT

Rev.	Date	Description	Init.
-	-	-	-

Client

HADFRAME

Project Title

HADFRAME SYSTEM

Drawing Title
3B5P
FRAMED ROOF EAVES DETAIL
INSULATED RENDER & COMPOSITE PANEL TILE (NO CAVITY)

Cad File Sheet Size Scale
1485_DETAILS SET A3 1:5

Drawn by Drawing Date Approved by
AM NOV 16 DW

Project No. Drawing No. Revision
1485 D06B-18 -

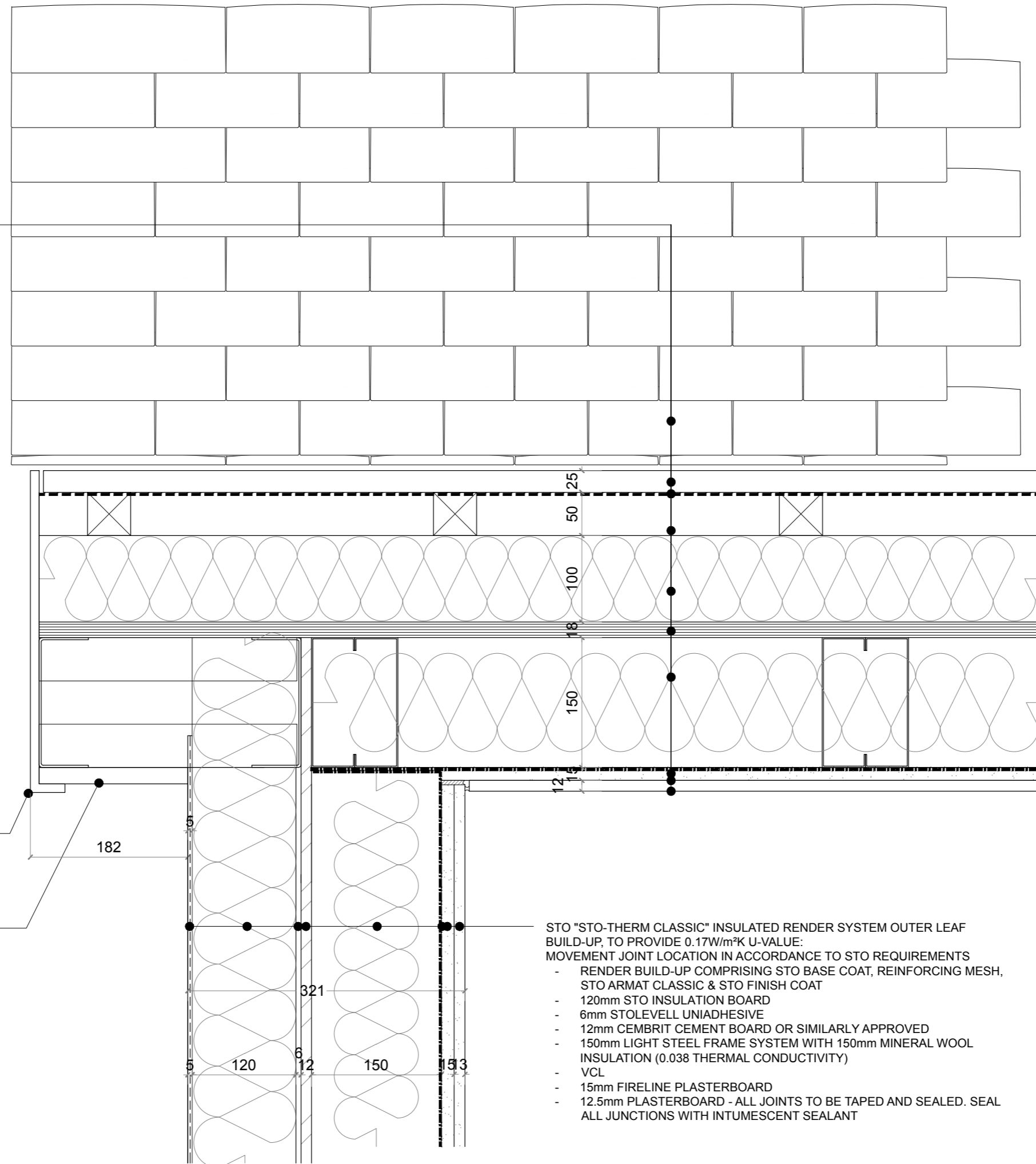
This drawing is property of Daria Wong Architects © and must not be copied or otherwise reproduced. All dimensions must be checked on site before commencing work. No dimensions to be scaled from this drawing. This drawing was produced using AutoCad LT.

PRELIMINARY

HABITABLE ROOF VOID

CLAY TILE ROOF (TO PROVIDE 0.13W/m²K U-VALUE):

- CLAY ROOF TILES ON 25x38mm TREATED SW BATTEN
- BREATHER MEMBRANE
- 50mm COUNTER BATTEN
- 100mm THICK ECOTHERM ECO-VERSAL INSULATION
- 18mm WBP
- 150mm LIGHT STEEL FRAME SYSTEM WITH 2 LAYERS OF 120mm ECOTHERM ECO-VERSAL INSULATION IN BETWEEN
- VCL
- 15mm FIRELINE PLASTERBOARD.
- 12.5mm PLASTERBOARD
- ALL JOINTS TO BE TAPED AND SEALED



PVC FASCIA BOARD

182

PROPRIETARY 19mm SOFFIT BOARD

STO "STO-THERM CLASSIC" INSULATED RENDER SYSTEM OUTER LEAF BUILD-UP, TO PROVIDE 0.17W/m²K U-VALUE:
MOVEMENT JOINT LOCATION IN ACCORDANCE TO STO REQUIREMENTS

- RENDER BUILD-UP COMPRISING STO BASE COAT, REINFORCING MESH, STO ARMAT CLASSIC & STO FINISH COAT
- 120mm STO INSULATION BOARD
- 6mm STOLEVELL UNIADHESIVE
- 12mm CEMBRIT CEMENT BOARD OR SIMILARLY APPROVED
- 150mm LIGHT STEEL FRAME SYSTEM WITH 150mm MINERAL WOOL INSULATION (0.038 THERMAL CONDUCTIVITY)
- VCL
- 15mm FIRELINE PLASTERBOARD
- 12.5mm PLASTERBOARD - ALL JOINTS TO BE TAPED AND SEALED. SEAL ALL JUNCTIONS WITH INTUMESCENT SEALANT

Rev.	Date	Description	Init.
-	-	-	-

Client

HADFRAME

Project Title

HADFRAME SYSTEM

Drawing Title
3B5P

**VERGE DETAIL - CLAY ROOF TILES
INSULATED RENDER**

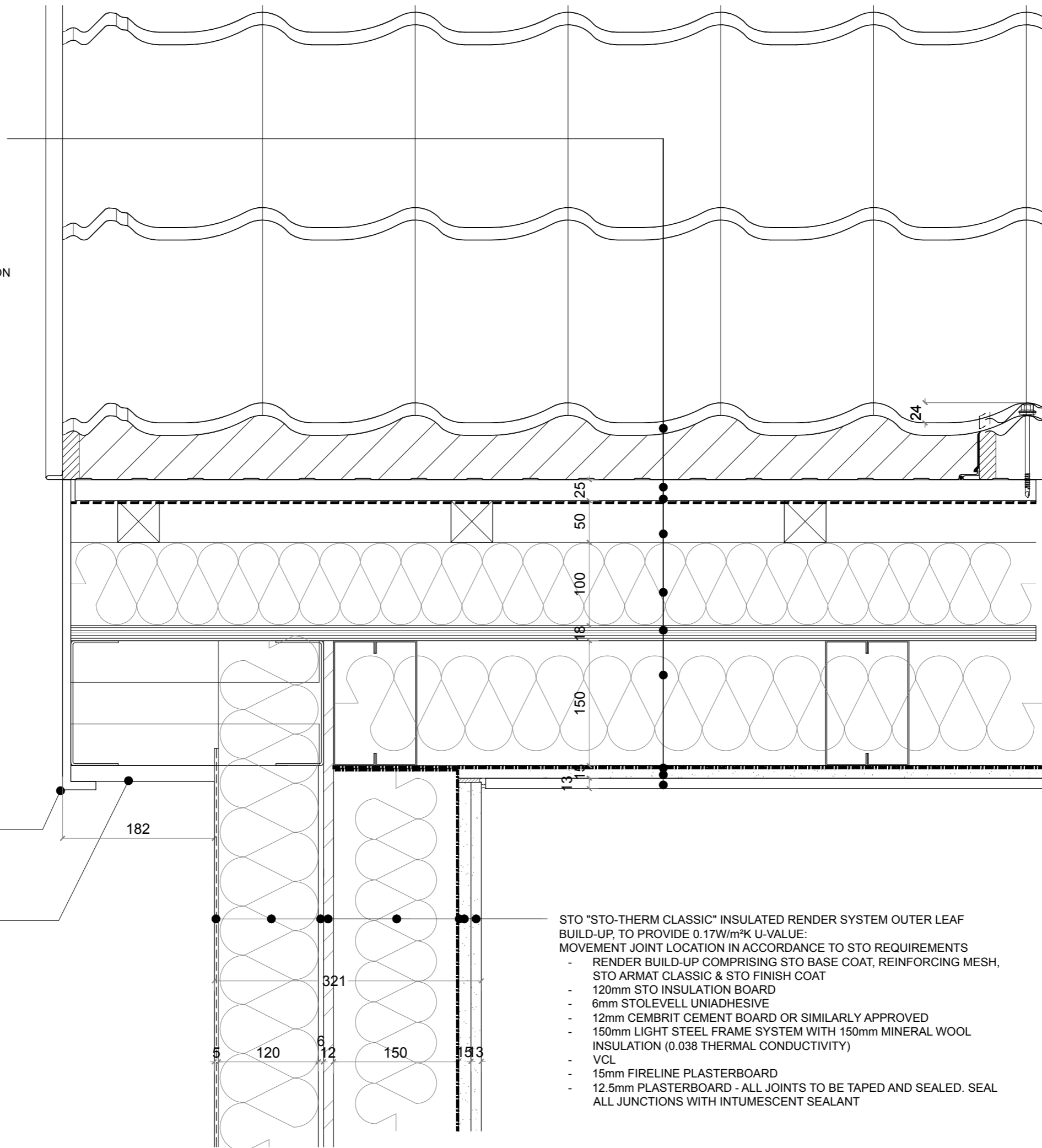
Cad File	Sheet Size	Scale
1485_DETAILS SET 03	A3	1:5
Drawn by	Drawing Date	Approved by
AM	NOV 2016	DW
Project No.	Drawing No.	Revision
1485	D06B-27	-

This drawing is property of Daria Wong Architects © and must not be copied or otherwise reproduced. All dimensions must be checked on site before commencing work. No dimensions to be scaled from this drawing. This drawing was produced using AutoCad LT.

PRELIMINARY

HABITABLE ROOF VOID

- JI PERMAPAN 1100 PIR INSULATED PANELS (TO PROVIDE 0.13W/m²K U-VALUE):
- 24mm HPS 200 ULTRA TOP SHEET COATING
 - 40mm HIGH THERMAL PERFORMANCE PIR FOAM
 - BREATHER MEMBRANE
 - 150mm LIGHT STEEL FRAME SYSTEM WITH 120mm ECOTHERM ECO-VERSAL INSULATION IN BETWEEN
 - VCL
 - 15mm FIRELINE PLASTERBOARD.
 - 12.5mm PLASTERBOARD
 - ALL JOINTS TO BE TAPED AND SEALED



PVC FASCIA BOARD

182

PROPRIETARY 19mm SOFFIT BOARD

- STO "STO-THERM CLASSIC" INSULATED RENDER SYSTEM OUTER LEAF BUILD-UP, TO PROVIDE 0.17W/m²K U-VALUE:
MOVEMENT JOINT LOCATION IN ACCORDANCE TO STO REQUIREMENTS
- RENDER BUILD-UP COMPRISING STO BASE COAT, REINFORCING MESH, STO ARMAT CLASSIC & STO FINISH COAT
 - 120mm STO INSULATION BOARD
 - 6mm STOLEVELL UNIADHESIVE
 - 12mm CEMBRIT CEMENT BOARD OR SIMILARLY APPROVED
 - 150mm LIGHT STEEL FRAME SYSTEM WITH 150mm MINERAL WOOL INSULATION (0.038 THERMAL CONDUCTIVITY)
 - VCL
 - 15mm FIRELINE PLASTERBOARD
 - 12.5mm PLASTERBOARD - ALL JOINTS TO BE TAPED AND SEALED. SEAL ALL JUNCTIONS WITH INTUMESCENT SEALANT

Rev.	Date	Description	Init.
-	-	-	-

Client

HADFRAME

Project Title

HADFRAME SYSTEM

Drawing Title

3B5P

**VERGE DETAIL - COMPOSITE PANEL TILE
INSULATED RENDER**

Cad File	Sheet Size	Scale
1485_DETAILS SET 03	A3	1:5

Drawn by	Drawing Date	Approved by
AM	NOV 2016	DW

Project No.	Drawing No.	Revision
1485	D06B-32	-

Project No.	Drawing No.	Revision
1485	D06B-32	-

Project No.	Drawing No.	Revision
1485	D06B-32	-

Project No.	Drawing No.	Revision
1485	D06B-32	-

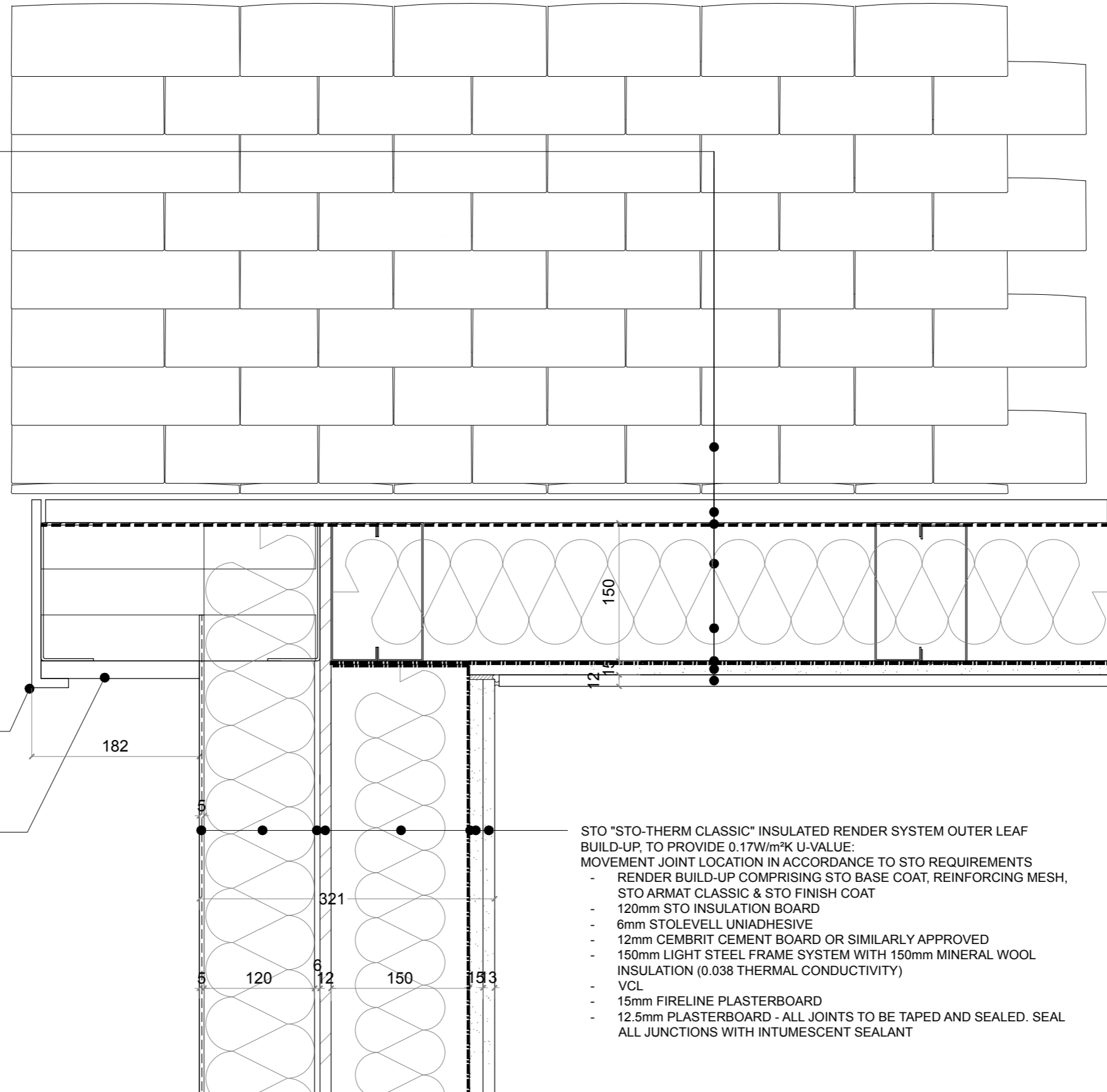
This drawing is property of Daria Wong Architects © and must not be copied or otherwise reproduced. All dimensions must be checked on site before commencing work. No dimensions to be scaled from this drawing. This drawing was produced using AutoCad LT.

PRELIMINARY

NON-HABITABLE ROOF VOID

CLAY TILE ROOF (TO PROVIDE 0.13W/m²K U-VALUE):

- CLAY ROOF TILES ON 25x38mm TREATED SW BATTEN
- BREATHER MEMBRANE
- 50mm COUNTER BATTEN
- 150mm LIGHT STEEL FRAME SYSTEM WITH 2 LAYERS OF 120mm ECOTHERM ECO-VERSAL INSULATION IN BETWEEN
- VCL
- 15mm FIRELINE PLASTERBOARD.
- 12.5mm PLASTERBOARD
- ALL JOINTS TO BE TAPED AND SEALED



PVC FASCIA BOARD

182

PROPRIETARY 19mm SOFFIT BOARD

STO "STO-THERM CLASSIC" INSULATED RENDER SYSTEM OUTER LEAF BUILD-UP, TO PROVIDE 0.17W/m²K U-VALUE:

- MOVEMENT JOINT LOCATION IN ACCORDANCE TO STO REQUIREMENTS
- RENDER BUILD-UP COMPRISING STO BASE COAT, REINFORCING MESH, STO ARMAT CLASSIC & STO FINISH COAT
 - 120mm STO INSULATION BOARD
 - 6mm STOLEVELL UNIADHESIVE
 - 12mm CEMBRIT CEMENT BOARD OR SIMILARLY APPROVED
 - 150mm LIGHT STEEL FRAME SYSTEM WITH 150mm MINERAL WOOL INSULATION (0.038 THERMAL CONDUCTIVITY)
 - VCL
 - 15mm FIRELINE PLASTERBOARD
 - 12.5mm PLASTERBOARD - ALL JOINTS TO BE TAPED AND SEALED. SEAL ALL JUNCTIONS WITH INTUMESCENT SEALANT

Rev.	Date	Description	Init.
-	-	-	-

Client

HADFRAME

Project Title

HADFRAME SYSTEM

Drawing Title
3B5P

**VERGE DETAIL - CLAY ROOF TILES
INSULATED RENDER**

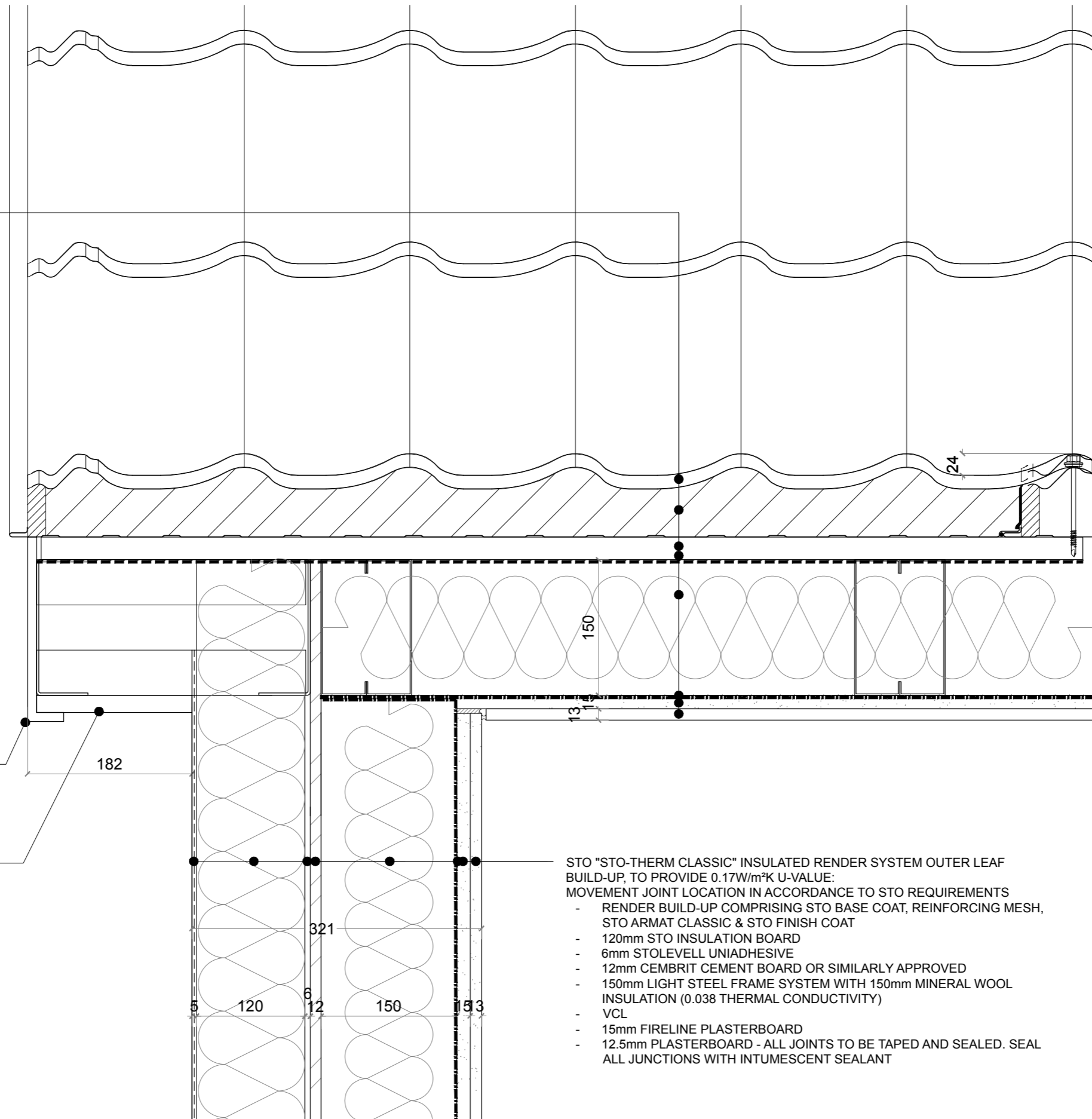
Cad File	Sheet Size	Scale
1485_DETAILS SET 03	A3	1:5
Drawn by	Drawing Date	Approved by
AM	NOV 2016	DW
Project No.	Drawing No.	Revision
1485	D06B-37	-

This drawing is property of Daria Wong Architects © and must not be copied or otherwise reproduced. All dimensions must be checked on site before commencing work. No dimensions to be scaled from this drawing. This drawing was produced using AutoCad LT.

PRELIMINARY

NON-HABITABLE ROOF VOID

- JI PERMAPAN 1100 PIR INSULATED PANELS (TO PROVIDE 0.13W/m²K U-VALUE):
- 24mm HPS 200 ULTRA TOP SHEET COATING
 - 40mm HIGH THERMAL PERFORMANCE PIR FOAM
 - BREATHER MEMBRANE
 - 50mm COUNTER BATTEN
 - 150mm LIGHT STEEL FRAME SYSTEM WITH 120mm ECOTHERM ECO-VERSAL INSULATION IN BETWEEN
 - VCL
 - 15mm FIRELINE PLASTERBOARD.
 - 12.5mm PLASTERBOARD
 - ALL JOINTS TO BE TAPED AND SEALED



PVC FASCIA BOARD

182

PROPRIETARY 19mm SOFFIT BOARD

150

13

321

120

6

150

153

STO "STO-THERM CLASSIC" INSULATED RENDER SYSTEM OUTER LEAF BUILD-UP, TO PROVIDE 0.17W/m²K U-VALUE:

- MOVEMENT JOINT LOCATION IN ACCORDANCE TO STO REQUIREMENTS
- RENDER BUILD-UP COMPRISING STO BASE COAT, REINFORCING MESH, STO ARMAT CLASSIC & STO FINISH COAT
 - 120mm STO INSULATION BOARD
 - 6mm STOLEVELL UNIADHESIVE
 - 12mm CEMBRIT CEMENT BOARD OR SIMILARLY APPROVED
 - 150mm LIGHT STEEL FRAME SYSTEM WITH 150mm MINERAL WOOL INSULATION (0.038 THERMAL CONDUCTIVITY)
 - VCL
 - 15mm FIRELINE PLASTERBOARD
 - 12.5mm PLASTERBOARD - ALL JOINTS TO BE TAPED AND SEALED. SEAL ALL JUNCTIONS WITH INTUMESCENT SEALANT

Rev.	Date	Description	Init.
-	-	-	-

Client

HADFRAME

Project Title

HADFRAME SYSTEM

Drawing Title

3B5P

**VERGE DETAIL - COMPOSITE PANEL TILE
INSULATED RENDER**

Cad File	Sheet Size	Scale
1485_DETAILS SET 03	A3	1:5

Drawn by	Drawing Date	Approved by
AM	NOV 2016	DW

Project No.	Drawing No.	Revision
1485	D06B-42	-

Project No.	Drawing No.	Revision
1485	D06B-42	-

Project No.	Drawing No.	Revision
1485	D06B-42	-

Project No.	Drawing No.	Revision
1485	D06B-42	-