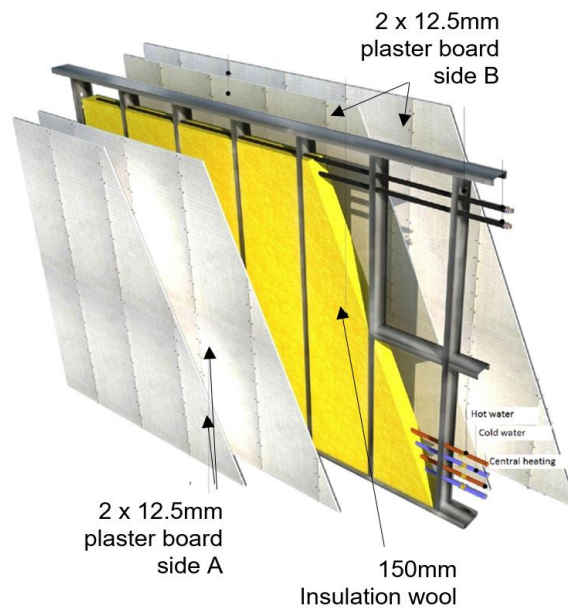


# Cladding - HadFrame C89mm interior wall profile



## Plaster Board cladding

GTEC Standard Board is for use as a general drylining board.

Two layers of 12.5mm standard plaster board sheets are required on each face of the HadFrame cold formed steel wall frames.

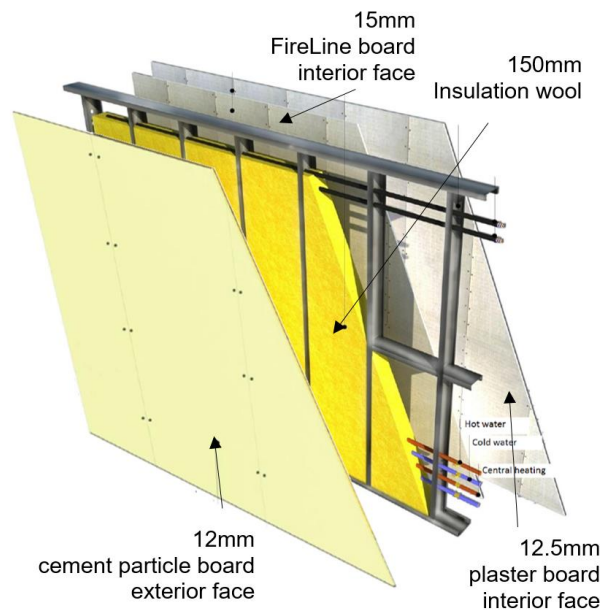
## Cavity Fill with Knauf insulation (or similar)

Earthwool SteelTherm Roll 40 is a lightweight, flexible and resilient, non-combustible glass mineral wool roll, which is manufactured in 600mm widths and specifically designed for friction fitting between standard light steel frame studs.

Knauf Earthwool SteelTherm cavity Insulation density 40 kg/m<sup>3</sup>.

Knauf Earthwool SteelTherm cavity Insulation is packed into the framework avoiding gaps and spaces.

# Cladding - HadFrame C150mm Exterior wall profile



## Cement Particle Board Cladding (Exterior face)

Cempanel (cement particle board) is superior to timber and plasterboard panel products when used as internal linings on rain screen cladding projects (sheathing), general purpose external boarding, floors or studwork interior walls. Cempanel is both stronger and less absorbent than timber and plasterboard. The high cement and alkaline content also resists insect and fungal attack.

One layer of 12mm cement particle board sheet is required on the external face on the HadFrame cold formed steel wall frames.

## FireLine Board & standard plaster board cladding (Interior face)

GTEC Fire Board is for use in areas where high technical performance is required. The board is stronger, harder and heavier than Standard plasterboard and has superior fire resistance, sound insulation and impact resistance in GTEC Drywall Systems.

One layer of 15mm FireLine (or similar) board sheet is required on the internal face and one layer of 12.5mm standard plaster board to complete the HadFrame cold formed steel wall frame requirement.

## Cavity Fill with Knauf insulation (or similar)

Earthwool SteelTherm Roll 40 is a lightweight, flexible and resilient, non-combustible glass mineral wool roll, which is manufactured in 600mm widths and specifically designed for friction fitting between standard light steel frame studs.

Knauf Earthwool SteelTherm cavity insulation density 40 kg/m<sup>3</sup>.

Knauf Earthwool SteelTherm cavity insulation is packed into the framework avoiding gaps and spaces.